

Central Ohio Area Agency on Aging **LONG TERM CARE AND HOSPICE GUIDE**



Counties Served

Delaware
Fairfield
Fayette
Franklin
Licking
Madison
Pickaway
Union



614-645-7250

800-589-7277

www.coaaa.org



**Your
Connection
to Care**

Updated July 2025

**This information is provided by:
The National Family Caregiver Support Program.**

This is a nationally funded program operated in Central Ohio by the Central Ohio Area Agency on Aging (COAAA). It offers caregiver workshops and funds services designed to assist caregivers on a short-term basis. The services include: information and assistance, counseling, respite, and other supplemental services

Request a copy or download our other guides from our website

www.coaaa.org under the RESOURCE Tab:

- Central Ohio Older Adults Resource Guide
- The Caregiver Toolbox
- Central Ohio Senior Housing & Home Repair Guide
- Central Ohio Pet Care Guide
- Central Ohio In-Home Care and Hiring Guide
- Central Ohio Utility Guide
- Central Ohio Transportation Guide
- Central Ohio Support Group Guide
- Central Ohio Transitions and Moving Guide
- Central Ohio Kinship Care Guide

The COAAA also provides monthly Caregiver Support Groups & Information Sessions. For more information call 800-589-7277 or visit www.coaaa.org. Or in your county, call one of these agencies:

- **SourcePoint**, 800 Cheshire Dr., Delaware, OH 43015, 740-363-6677, www.mysourcepoint.org.
- **Meals on Wheels of Fairfield County**, 1515 Cedar Hill Rd., Lancaster, OH 43130, 740 681-5050, www.mowfc.org
- **Fayette County Commission on Aging**, 1179 S. Elm St., Washington Court House OH 43160, 740-335-2159, www.fayettecoa.com
- **For Caregiver Services: Community Action Commission of Fayette Co.** 1400 Co. Hwy. 22, Washington CH, OH 43160, 740-335-7282, www.cacfayettecounty.org
- **Franklin Co. Office on Aging**. 280 E. Broad St., 3rd Floor, Columbus, OH 43215, 614-525-6200, www.officeonaging.org
- **Licking Co. Aging Program**, 1058 E. Main St., Newark, OH 43055, 740-345-0821 www.lcap.org
- **Madison Co. Senior Center** 280 W. High St., London, OH 43140, 740-852-3001, www.mcseior.org
- **Pickaway County Senior Center**, 2105 Chickasaw Dr., PO Box 565, Circleville, OH 43113, 740-474-8831, www.pickawayseniors.org
- **Union County Senior Services**, 940 London Ave., Marysville, OH 43040, 937-644-1010, www.co.union.oh.us

Updated Spring 2024

Central Ohio Long-Term Care & Hospice Guide

Table of Contents

<u>Topic</u>	<u>Page Numbers</u>
1. Programs for Those Who Want to Receive Long-Term Care Services in their Homes.....	2
A. Local County Aging Services Tax Levies	2
B. Medicaid Waivers for Long-Term Care Services	3
C. Other Resources for Community-Based Living in Ohio	4
D. Types of Community and Home-Based Services Available.....	5
2. Ohio’s Ombudsman Program	8
3. Central Ohio Retirement Campuses.....	8
4. Advisors/Assistance for Those Seeking Long-Term Care Placement	9
5. LIST of Central Ohio Adult Care Facilities (Supportive Living & Group Homes)	11
6. LIST of Central Ohio Assisted Living Facilities	17
7. LIST of Central Ohio Skilled & Intermediate Nursing Facilities	25
8. LIST of Central Ohio Hospice Providers	33

This resource guide is brought to you by the Central Ohio Area Agency on Aging. Any unauthorized use and/or duplication of this material without the prior express and written permission from the Central Ohio Area Agency on Aging is strictly prohibited.

This guide is not a substitute for professional advice and care. If you have specific needs, please see a professional provider. Links to websites are provided for convenience and do not constitute or imply endorsement. Every reasonable effort is taken to ensure accurate information; however, we cannot guarantee completeness or timeliness. COAAA assumes no responsibility for outcomes resulting from the use of information contained in this guide.

1. Programs for Those Who Want to Receive Services in Their Homes

Many communities offer a range of home and community-based services for older adults who wish to receive care while living in their own home, apartment or condominium. **All** services accept self (private) pay. Government-funded programs may provide services at no or lower cost to individuals with limited financial resources. The cost of services will vary in each community. **Individuals should explore financial assistance or insurance coverage for any needed service.**

Free, Professional Consultation is Available to Help:

- Determine which services are needed
- Determine what payment options are available to you
- Locate service providers
- Evaluate all long-term care options

Phone Numbers for Consultation:

- **Nationwide:** Eldercare Locator-800-766-1116 or www.eldercare.acl.gov
- **In Ohio:** Long-Term Care Consultations-866-243-5678
- **Central Ohio:** The Central Ohio Area Agency on Aging-800-589-7277

A. Local County Aging Services Tax Levies

In Ohio, many counties fund aging services through local property or sales tax levies. These counties often have a variety of home and community-based services available on a sliding fee scale. In Central Ohio, this includes the following: Delaware, Fairfield, Franklin, Licking, Madison, Pickaway, and Union Counties. Fayette County is **the only** county in Central Ohio without an Aging Services Tax Levy. For more information on all Ohio aging services tax levies go to: www.aging.ohio.gov

Contact Information for Central Ohio Aging Tax Levy Services:

Delaware County—SourcePoint, www.mysourcepoint.org, 740-363-6677

Fairfield County—Meals on Wheels of Fairfield County, www.mowfc.org, 740-681-5050

Franklin County—Franklin County Office on Aging, www.officeonaging.org, 614-525-6200

Licking County—Licking County Aging Partners, www.lcap.org, 740-345-0821

Madison County—Madison County Senior Center, www.mcsenior.org, 740-852-3001

Pickaway County—Pickaway County Senior Center www.pickawayseiors.org, 740-474-8831

Union County—Union County Senior Services, www.co.union.oh.us, 937-644-1010

B. Medicaid Waiver Programs for Long-Term Care Services

- The Medicaid Waiver Programs fund in-home services for individuals as an alternative to receiving care in a care facility.
- Waiver services can include: medical and nursing care, personal care, homemakers, adult day services, home-delivered meals, emergency response systems, medical supplies, home modifications for accessibility, and transportation to medical appointments.
- Ohio offers many different types of Medicaid Waiver Programs. For more information and program intake contact the Central Ohio Area Agency on Aging at 614-645-7250 or 800-589-7277.
 - **PASSPORT**—for anyone *age 60 and over* and living in the community.
 - **Ohio Assisted Living Waiver**—for anyone age 21 and over and living in a *participating* assisted living facility. These waivers are very limited in availability.
 - **Ohio Home Care Waiver**—for anyone age 59 and under (including children) and living in the community.
 - **Developmental Disabilities Waivers**—for anyone with a developmental disability diagnosis and living in the community. Go to www.dodd.ohio.gov for more information. Intake is typically through the county Board of Developmental Disabilities. **These waivers have some waiting lists.**
 - **My Care Ohio**—for anyone enrolled in both Medicare and Medicaid. The following Central Ohio counties participate in this waiver: Delaware, Franklin, Madison, Pickaway, and Union. Under the **MyCare Ohio Waiver**, managed care organizations (MCOs) coordinate benefits for people who have both Medicare & Medicaid. This includes both health care and long-term care benefits. For Central Ohio the MCOs are: **Aetna Better Health of Ohio** and **Molina Healthcare of Ohio Inc.**



C. Other Resources for Community Living in Ohio

- **Specialized Recovery Services (SRS) Program**
 - The program provides Medicaid and other benefits for individuals age 21 and older who have severe and persistent mental illness, individuals with certain chronic medical conditions, or individuals who are in need of organ or soft-tissue transplants or are former transplant recipients. Call Medicaid's hotline for more information 800-324-8680.

- **Home Choice**
 - The program provides assistance with moving back into the community from a care facility. Services include a Transition Coordinator, and limited funds to assist with establishing a new household. For Central Ohio, call 888-221-1560 to start the application process.

- **Residential State Supplement (RSS)**
 - The program provides financial assistance to adults with disabilities who can live in eligible community housing that provides some support services. RSS pays for accommodations, supervision, and personal care services. For more information, call 614-752-9316.

- **Recovery Requires a Community**
 - The program assists people diagnosed with mental illness to move to and remain in community housing. It pays for goods and services not covered by other funding programs. For more information, call 614-466-9985.



D. Types of Community and Home-Based Services Available

These services can be provided in the home, condominium, or apartment. The cost varies **widely** by the type of service needed, the intensity, and the type of provider hired. Services can be medical and not medical. Most home care providers offer more than one type of service (e.g., chore services vs. homemaker vs. personal care). Whether hiring an agency or self-employed individual, it is important to establish what types of service you need ahead of time. Lists of some of these providers can be found in the *other COAAA Guides* which are downloadable from www.coaaa.org.

Adult Day Programs – also referred to as Adult Day Health Programs

Programs offer social and recreational activities, supervision, health services, and meals in a protective setting for older adults with physical or cognitive disabilities. Typically, open weekdays during business hours. May provide transportation to and from the center. Very often helpful for family members seeking caregiver relief.

Emergency Identification Programs

Several programs exist which can identify individuals if they have wandered away from the home or from caregivers. They include:

- **Ohio Next of Kin Registry**
 - Any person can **ADD** emergency contacts to his/her Driver's License or Ohio State ID at no cost. Emergency services personnel, safety, and highway patrol officers can access this information in the event of an accident or incident. To access paper or web forms go to www.bmv.ohio.gov.
- **Project Lifesaver**
 - The primary mission of Project Lifesaver is to provide timely response to save lives and reduce potential injury for adults and children who wander due to Alzheimer's, autism, and other related conditions. Citizens enrolled in Project Lifesaver wear a small personal transmitter around the wrist or ankle that emits an individualized tracking signal. Check the website for a program in your area at www.projectlifesaver.org.
- **Medic Alert +Alzheimer's Association Safe Return**
 - Medic Alert[®] + Alzheimer's Association Safe Return[®] is an emergency response service for individuals with Alzheimer's or a related dementia who wander or have a medical emergency. There is a small cost involved. The website is: www.medicalert.org/alz.

Emergency Response Systems (ERS)

A service that provides individuals with a call button, which alerts a call center to get help from family, friends, or emergency services. Services may include smoke detection and medication reminders. Services/units may be rented or purchased.

Heavy Housekeeping and Chore Services

Assistance with heavy house cleaning, minor home repairs.

Home Medical Equipment

Offers many types of assistive and adaptive equipment to help people function in daily life despite disability and impairments. The cost of some equipment such as wheelchairs, hospital beds, oxygen, etc., is covered by Medicare and other insurances with a doctor's prescription. Some needs are private pay like incontinence products, grab bars, shower chairs, stair lifts, etc. Sometimes a governmental program can assist with costs.

Home Repair & Modification

Changes or additions to the structure of a home to improve safety and accessibility. Examples include the addition of grab bars, hand-held shower units, ramps, or stair lifts. May also include widening doorways, re-fitting bathrooms, or relocating laundry facilities to the main level of the home.

Hospice

Services for persons with terminal illnesses provided in the home or a long-term care setting. Includes home health services, volunteer support, grief counseling, and pain management. Medicare and other health insurance generally pays for set of services. A list of Central Ohio Hospice Providers is on p. 33-35 of this guide.

In Home Care

Many types of services may be available for someone living in their home or apartment. Some are funded by governmental sources and some are not. Generally, they are referred to as **Medical and Non-Medical Assistance**.

- **Medical Assistance** can be covered by Medicare and other insurance often after a hospitalization. Sometimes this type of care is referred to as "skilled" or "rehabilitation." Services can include:
 - **Nurses**
Provide medical care and medical monitoring.
 - **In Home Therapists**
Speech, Physical, and Occupational Therapies- Provide training in communication, physical movement, or doing daily tasks.
 - **Home Health Aides (or Personal Care Aides)**
Provide assistance with personal care such as: bathing, dressing, feeding.

- **Non-Medical Assistance** is generally **not** covered by insurance or Medicare. Most would be private pay. However, **some** of the government programs including Medicaid Waivers and some local tax levies can fund these services if a person meets their qualification. Sometimes these services can provide respite for a family caregiver. The types of services can include:

Homemakers

- Provide assistance with light housekeeping, laundry, cooking, and errands.

Companions

- Provide conversation, supervision, and some help with meals or tasks.

Meal Programs (Both Home Delivered and Congregate)

Meals delivered to homebound individuals or at group dining locations in the community. Typically provided up to five or more days per week.

Pest Control

Treats a home or apartment for many types of insects and small animals. The most frequently utilized service is for roaches and bed bugs. Treatment can be trap-based, chemical- or heat-based. Some of these programs include the preparation for the treatment as well. There is **very limited financial assistance** for this service.

Respite Care

Short-term care provided for an older person to allow caregivers time away from their caregiving role. Provided by trained professionals or volunteers in the home or by short-term admission to an assisted living or nursing facility. This type of care may also be offered in an Adult Day Health Program (see above).

Senior Centers

Provide social activities, information, and a range of services. May be a community dining location, and may offer transportation to members living in their service areas.

Telephone Reassurance

Regular phone calls to check on the person's well-being.

Transportation Services

Provide rides to medical appointments, shopping, and other activities. Many different kinds of transportation providers and sources of funding. See **COAAA's Transportation Guide** for a more detailed list of providers.

2. Central Ohio Ombudsman Program

Ohio's office of the State Long-term Care Ombudsman advocates for people receiving home care, assisted living, and nursing home care. Paid and volunteer staff work to resolve complaints about services, help people select a provider, and offer information about benefits and consumer rights.

Ombudsmen do not regulate nursing homes and home health agencies, but do work with providers, residents, their families, and other representatives to resolve problems and concerns.

In addition, ombudsmen:

- Advocate for person-centered approaches by providers to meet the needs and honor the preferences of residents
- Link residents with services or agencies
- Offer resources for selecting long-term care providers
- Provide information and assistance with benefits and insurance

In central Ohio, contact the Ombudsman at 800-536-5891 or www.centralohio.easterseals.com

3. Central Ohio Retirement Campuses (CCRC)

These offer a grouping of housing facilities for older adults with multiple levels of living options, which may include: independent, assisted living, skilled and intermediate nursing care.

Residents *may or may not* pay an endowment fee to obtain services to suit their changing needs.

Some of these are called Continuing Care Retirement Communities (CCRCs).

There are three basic types of contracts for CCRCs:

- **Life Care or Extended Contract:** This is the most expensive option but it offers unlimited assisted living, medical treatment, and skilled nursing care without additional charges.
- **Modified Contract:** This contract offers a set of services provided for a set length of time. When that time is expired, other services can be obtained, but for higher monthly fees.
- **Fee-for-Service Contract:** The initial enrollment fee may be lower, but assisted living and skilled nursing will be paid for at their market rates.

It is very important to review each option as well as the long-term financial plan to support them. Often, charges above and beyond the entrance cost and monthly fees arise. Ensure that everyone understands just how much money will be needed to support this housing option. Also, make sure the facility being considered will be financially viable over the long term. Get assurance that 10 to 15 years down the road the CCRC will still be operating and able to provide the care that has already been purchased.

4. Advisors/Assistance for Those Seeking Long Term Care Placement

Aging Life Care Professionals

An Aging Life Care Professional, also known as a Private Geriatric Care Manager, is a health and human services specialist who acts as a guide and advocate for families who are caring for older relatives or disabled adults. They often have knowledge about the costs, quality, and availability of resources in their communities. They generally charge an hourly fee and are insured. Their national association's website is www.aginglifecare.org.

Shanna Huber, RN, BSN, MSN/Ed,
CCM, *Ripple Life Care Planning*
614-408-9928
www.ripplelifecareplanning.com

Jeanna McElroy, BA, CMC
Senior Support Services, LLC
614-887-7750
www.seniorsupportservicesohio.com

Beth Herring, BS, OTR/L, CMC
Elder Life Solutions
614-476-2289
www.elderlifesolutions.com

Melanie S. Hankinson, LPTA,
CSA, BCPA, *IKOR of Columbus*
614-956-1231
www.ikorcolumbus.com

Gayle S. Rosen, MBA, CMC
Age Well Options
614-266-7211
www.agewelloptions.com

Private Patient Advocate

Annette Ticoras, MD, provides private patient advocacy services to Central Ohio seniors and their families. As a physician, she helps families in the healthcare system who are overwhelmed, confused, and uncertain of the next steps. Guided Patient Solutions' (GPS) services include such things as accompaniment to routine medical care appointments, surgery, ER visits, and hospitalizations.

Contact 614-981-5951 or learn more at www.GPScolumbus.com

Housing & Long-Term Care Advisors:

A group of companies and advisors who assist families in locating options when a person is seeking long term care placement. These services are generally at no cost to an individual or a family since the facilities pay the advisors a fee for successful placement. These advisors will locate options for individuals, accompany people on a visit, assist to negotiate placement, and often assist with the actual move. They generally assist individuals who will be **paying privately** for assisted living, intermediate, or skilled nursing home placement, including care for those persons who are suffering from memory impairments.

A Place for Mom-Central Ohio
800-769-0509
www.aplaceformom.com

Care Patrol of Central Ohio
614-679-5319
www.carepatrol.com

Assisted Living Locators
614-347-6140
www.assistedlivinglocators.com

Illuminate Senior Services
740-857-5258
www.illuminateseniorservices.com

Oasis Senior Advisors
614-389-9113
www.oasissenioradvisors.com

Senior Move Managers

- Senior Move Management is the profession that assists older adults and their families with the emotional and physical aspects of relocation and/or "aging in place." Although specific services vary, most Senior Move Managers can help with some or all of the following:
 - Developing an overall move or "age in place" plan
 - Organizing, sorting and downsizing
 - Customized floor plans
 - Arranging for the profitable disposal of unwanted items through auction, estate sale, buy-out, consignment, donation, or a combination of the above
 - Interviewing, scheduling and overseeing movers
 - Unpacking and setting up the new home
- They generally charge an hourly fee and are insured. Their national association's website is www.nasmm.org.

Senior Downsizers

Kit and Lisa Lynch

614-964-2202

www.seniordownsizers.com

Rosie's House

Teri Mutchler

614-421-7964

www.rosiehouse.com

Transitioning Your Senior

Tonya Kreml

614-266-3285

www.transitioningyoursenior.com

Smooth Transitions

This is a national company with several local affiliates:

Karen Spiller, Jasmine Hendricks, Holly Swisher,

Brian Greenwood

844-266-4663

www.smoothtransitions.com

Blue Robin Downsizing

Libby Patrick

740-706-1480

www.bluerobindownsizing.com

Downsize With A Heart

Furniture Bank of Central Ohio

614-545-3844

www.downsizewithaheart.org

Senior Real Estate Specialists

- Real Estate Agents can pursue a special designation/specialty as Senior Real Estate Agent. The SRES designated agent takes special courses designed to build skills and resources needed for specialization in the 50+ real estate market. The SRES designation program provides ongoing professional training and development, as well.
- To locate a SRES designated Real Estate Agent, go to www.seniorsrealestate.com

Professional Organizers and Productivity Consultants

- People who work in this field are very diverse. However, they generally charge an hourly fee and are insured. The national association's website is www.napo.net and the state association is www.napo-ohio.com. You can locate providers by putting in your zip code and doing a search. There is a complete list of Professional Organizers in the **COAAA Moving and Transitions Guide**.

LIST of Central Ohio Adult Care Facilities

*Also called Supportive Living Homes, Group
Homes, or Residential Facilities*

Organized Alphabetically by County

For more detailed information, contact:
Ohio Adult Care Facilities Association at 614-927-2421,
or visit

www.ohioadultcarefacilities.org

or www.ltc.age.ohio.gov*

*on this site, these facilities are called “supportive living”

Note: Every reasonable effort is taken to ensure accurate information. However, we cannot guarantee completeness or timeliness of information. Some of the names, addresses, or phone numbers of the facilities may have changed since the printing of this guide. List updated Spring 2024.

Central Ohio Adult Care Facilities

Also Called Supportive Living Homes, Group Homes, or Residential Facilities

These are licensed facilities that provide accommodations to unrelated persons. They include room and board and may or may not include: supervision, personal care and/or mental health services. This setting may also provide supervision, social services and accommodations, but treatment services are provided separately and service intensity will vary from resident to resident. Residential Facilities are divided into Class 1, Class 2, and Class 3. The Ohio Department of Mental Health and Addiction Services licenses these homes. Their website is www.mha.ohio.gov and their information number is 614-466-1590. The following are the types of facilities:

Class 1: Provides accommodations, supervision, personal care services, and mental health services for one or more unrelated adults with mental illness and owned/operated by a Behavioral Health Agency. **(This guide does not list Class 1 Facilities.)**

Class 2: Provides accommodations, supervision, and personal care services to any of the following:

- 1-2 unrelated persons with mental illness (formerly MH Residential Facility Type 2)
- 1-2 unrelated adults who are receiving Residential State Supplement payments (see RSS description above; formerly called an Adult Foster Home).
- 3-16 unrelated adults (formerly called an Adult Family Home or an Adult Group Home).

Class 3: Provides room and board (no personal care services) to 5 or more unrelated adults with mental illness diagnoses.

Lists of Central Ohio Residential Facilities by county can be found in this guide. Lists can also be found on the website (called Supportive Housing) www.ltc.age.ohio.gov & www.ohioadultcarefacilities.org



Central Ohio Adult Care Facilities List

Delaware County

**Galena Manor Assisted Living
(10 Residents)**

8160 Dustin Road, Galena, OH 43021
740-936-5212

Westerville Manor (5 Residents)

6685 Tussic St., Westerville, OH 43082
614-942-6624

Ashley Manor (16 Residents)

445 Ashley Rd.
Ashley, OH 43003
740-747-3229

Fairfield County

Best Days Senior Living (9 Residents)

9482 Carroll Northern Rd., Pickerington, OH 43147
614-400-4419

Dalan House Adult Group Home (12 Residents)

1519 East Main Street, Lancaster, OH 43130
740-823-2103

Good Shepard Adult Care (6 Residents)

1055 Zion Rd. SE, Lancaster, OH 43130
740-438-0019

Good Shepard Adult Care 2 (6 Residents)

619 Country Line Rd., Bremen, OH 43107
740-569-7243

Kathy's Kare Haven (8 Residents)

5715 Westfall Road SW, Lancaster, OH 43130
740-475-8062

Scott's Place (6 Residents)

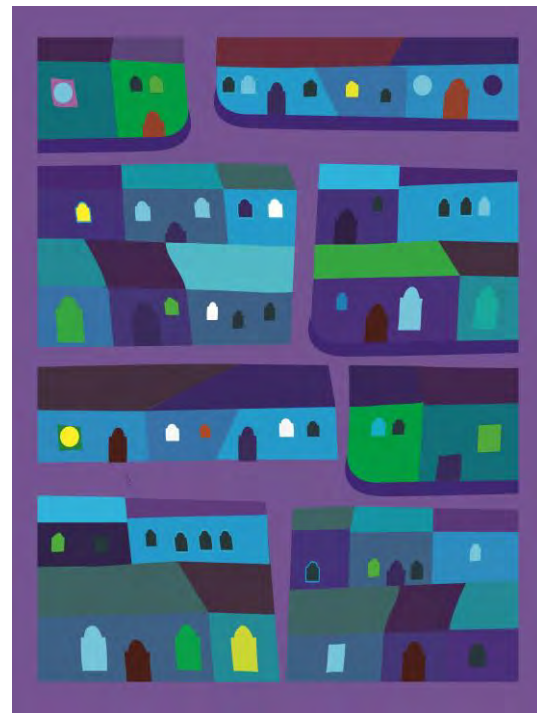
504 Overlook Dr., Lancaster, OH 43130
740-785-4494

Sterrit House (10 Residents)

707 E. Main St., Lancaster, OH 43130
740-823-2103

Fayette County

Currently no licensed
facilities.



Franklin County

1st Paradise Home (4 Residents)

4146 Cleveland Ave., Columbus, OH 43224
614-989-4385

A Caring Source Home Health Care (3 Residents)

680 Robinwood Ave., Columbus, OH 43213
614-674-6137

AMAI Angeline (5 Residents)

1191 E. College Ave., Westerville, OH 43081
614-615-2070

Arms of Love (5 Residents)

2677 Eakin Rd., Columbus, OH 43204
614-914-8284

ASA Family Home, LLC (4 Residents)

2704 Glenbriar St., Columbus, OH 43232
614-751-1361

Blanton Health Care (5 Residents)

3040 Longridge Way, Grove City, OH 43123
614-746-4442

Blanton House at Meadow Grove Estates (8 Residents)

1944 Mallow Lane, Grove City, OH 43123
614-871-3531

Comfortable Housing, Inc. (5 Residents)

6268 Brauning Drive, Reynoldsburg, OH 43068
614-859-4002

Comfortable Housing, Inc. #2 (5 Residents)

446 Brice Rd., Reynoldsburg, OH 43068
614-694-4593

Comfortable Housing, Inc. #3 (8 Residents)

1480 Golding Dr., Reynoldsburg, OH 43068
614-986-8054

Crandall House (5 Residents)

146 Crandall Drive, Worthington, OH 43085
614-846-4663

Eason House (5 Residents)

5249 Rush Avenue, Columbus, OH 43214
614-396-6194

Esther's Place (3 Residents)

5550 Sinclair Rd., Columbus OH 43229
614-554-7697

Grace's Caregiving Home (5 Residents)

7521 Hemrich Dr., Canal Winchester,
OH 43110 614-524-4544

Hampton & Bush Loving Care (5 Residents)

1011 E. Deshler Ave., Columbus, OH 43219
614-404-7574

Home of Joy Residential Care (12 Residents)

1182 Country Club Rd., Columbus, OH 43227
614-986-7515

Home of Joy Residential Care 2 (5 Residents)

6540 Birchview Dr. N.,
Reynoldsburg, OH 43068 614-600-1030

My Best Friend's Place (5 Residents)

3103 Bluefield Dr., Columbus, OH 43207
614-295-8149

My Brothers Other Place (5 Residents)

3016 Weirton Dr., Columbus, OH 43207
614-295-8911

My Family Home LLC (5 Residents)

877 Lockbourne Rd., Columbus, OH 43206
614-592-9323

My Friend's Place in Unity (5 Residents)

714 Miller Ave., Columbus, OH 43205
614-332-6403

Powell House (5 Residents)

2322 Sunbury Road, Columbus, OH 43219
(614) 476-2633

Powell House II Adult Family Home (4 Residents)

1643 Marina Drive, Columbus, OH 43219
614-230-2336

Priceless Senior Care Home (5 Residents)

2126 Belltree Dr., Reynoldsburg, OH 43068
614-626-0420

Pyramid House(5 Residents)

2322 Pontiac St., Columbus, OH 43211
614-584-1625

Threads of Soul (3 Residents)

1704 Marina Dr., Columbus, OH 43219
614-824-3164

Togetherness Family Home (5 Residents)

3846 Bernard Pl., Columbus, OH 43224
614-607-3656

Licking County

Altmaier House (7 Residents)

61 Granville Street, Newark, OH 43055
740-788-0375

River Valley Apartments (8 Residents)

837 East Main Street, Newark, OH 43055
740-349-3071

Madison County

Mt. Sterling Place (16 Residents)

160 W. Main Street, Mt. Sterling, OH 43143
740-869-7669

Sister's Elderly Life Residential Inns Adult Group Home (12 Residents)

76 Elm Street London, OH 43140
740-852-3988

Sister's on Main (16 Residents)

16 N. Main Street, London, OH 43140
740-852-3988

Pickaway County

Howard's Care Home (13 Residents)

906 South Court Street, Circleville, OH 43113
740-412-7663

Maze Residential Care Home (6 Residents)

416 Cedar Heights Road, Circleville, OH 43113
740-474-4153

The Caring Touch of Ohio (7 Residents)

11274 Route 23, Lockbourne, OH 43137
740-983-6542

We Care Court (3 Residents)

5300 Hagerty Road, Ashville, OH 43103
740- 474-3440

Union County

Currently no licensed facilities.



LIST of Central Ohio *Assisted Living Facilities*

Organized Alphabetically by County

For more detailed information, visit:

- www.ltc.age.ohio.gov
 - Ohio Long Term Care Consumer's Guide
- www.odh.ohio.gov
 - Ohio Department of Health
These facilities are licensed by the Ohio Department of Health as *Residential Facilities*. Assisted Living is primarily a marketing term in Ohio.
- www.ohioassistedliving.org
 - Ohio Assisted Living Association

Note: Every reasonable effort is taken to ensure accurate information. However, we cannot guarantee completeness or timeliness of information. Some of the names, addresses, or phone numbers of the facilities may have changed since the printing of this guide. List updated Spring 2024.

Central Ohio Assisted Living Facilities

Description

- An Assisted Living Facility provides the resident with a range of services most of which **do not** need to be provided by a nurse or other medically trained person. These would include meals, transportation, housekeeping assistance, and socialization.
- Assisted living facilities in Ohio are also called *Residential Care Facilities* and are licensed by the Ohio Dept. of Health at www.odh.ohio.gov.
- For complaints about care in these facilities, contact the Ohio Department of Health in writing or by phone at 1-800-342-0553 (Monday-Friday 8:00am-5:00pm).
- The Ohio Long Term Care Consumer Guide lists assisted living facilities by county and zip code. It includes helpful information to compare facilities. The website is www.ltc.age.ohio.gov.
- The Ohio Assisted Living Association also has a directory of assisted living facilities with information on services and fees for its member organizations. It is available at www.ohioassistedliving.org.
- For the most part, assisted living facilities are **PRIVATE PAY**. Cost ranges from \$3000 to \$8,000 per month. Some Assisted Living Facilities have an all inclusive pricing structure and others have a base cost and then different charges for additional services (for example, personal care, pets, medication administration, etc.)
- There is a **very limited** Medicaid Assisted Living Waiver program which provides funding of care for eligible adults living in approved assisted living facilities. This waiver program does **not pay the room and board fee** but can assist with the services fee. Assisted living facilities in Ohio often require residents to pay for 1-4 years' private pay before applying for the waiver to cover care. For information on assisted living facilities which accept the Medicaid waiver, go to www.ltc.age.ohio.gov.
- Ask at the facilities you are considering whether they accept the waiver and/or what criteria they use to consider accepting the waiver. To apply for the waiver once you have a participating facility, contact the COAAA to schedule an assessment at 614-645-7250.
- Assisted Living Facilities **MAY** offer a memory care unit. These units will often offer specialized services and are more costly than the other units of the facility. However, they are licensed *exactly the same*. So, if an individual requires a high degree of personal care or has extensive behavioral needs, these facilities may discharge the person to a Licensed Intermediate Level of Care Facility(Nursing Home) which is better equipped to handle their needs.

Central Ohio Assisted Living Facilities List

Delaware County

Abbingtion of Powell

3971 Bradford Court,
Powell, OH 43065
740-789-9868 54 Beds

Avalon of Lewis Center

8875 Green Meadows Dr.,
Lewis Center, OH 43035
740-513-2270 150 Beds

Centrum at Willow Brook

100 Willow Brook Way S.
Delaware, OH 43015
740-369-0648 133 Beds

Feridean Commons

6885 Freeman Road
Westerville, OH 43082
614-898-7488 66 Beds

Ganzhorn Suites

10272 Sawmill Parkway
Powell, OH 43065
614-356-9810 68 Beds

The Gables of Westerville

131 Moss Rd.,
Westerville, OH 43082
614-918-0500 150 Beds

Inn at Bear Trail

8199 Monroe Dr.,
Lewis Center, OH 43035
740-879-3181 132 Beds

Inn at Olentangy Trail

36 Corduroy Road,
Westerville, OH 43082
740-417-9287 120 Beds

Inn at Walnut Trail

100 N. Miller Dr., Sunbury, OH 43074
740-913-0132 137 Beds

Ohio Living Sarah Moore

26 N Union Street
Delaware, OH 43015
740-362-9641 30 Beds

Paramount Senior Living at Polaris

690 Cooper Rd.
Westerville, OH 43081
614-794-2499 151 Beds

Sarah Moore Home

47 E. William Street,
Delaware, OH 43015
740-362-9641 21 Beds

StoryPoint Powell North

3872 Attucks Dr.,
Powell, OH 43065
614-588-2013 106 Beds

Westerville Danbury

730 N. Spring St.
Westerville, OH 43082
614-794-9300 249 Beds

Willow Brook at Delaware Run

100 Delaware Crossing W.
Delaware, OH 43015
740-201-5640 322 Beds

Central Ohio Assisted Living Facilities List

Fairfield County

Abbington of Pickerington Partners

9480 Blacklick-Eastern Rd
Pickerington, OH 43147
614-577-0822 54 Beds

Inn at Winchester Trail

6401 Winchester Trail,
Canal Winch., OH 43110
614-829-6388 145 Beds

Amber Park Assisted Living

401 Hill Road North
Pickerington, OH 43147
614-834-3113 172 Beds

Primrose Retirement Communities & Memory Care

1481 Wesley Way
Lancaster, OH 43130
740-681-1156 166 Beds

Bickford of Lancaster

1834 Country Side Drive
Lancaster, OH 43130
740-689-9944 113 Beds

Reflections Retirement Community

2750 West Fair Avenue
Lancaster, OH 43130
740-653-1423 58 Beds

Carroll Place

3682 Dolson Court, NW
Carroll, OH 43112
740-654-4529 56 Beds

The Ridge at Lancaster

241 Whittier Dr., S.
Lancaster, OH 43130
740-202-9922 50 Beds

Violet Springs

603 Diley Rd.
Pickerington, OH 43147
614-751-6413 41 Beds

Fayette County

Carriage Court of Washington Court House

500 N. Glenn Ave,
Washington Court House, OH 43160
740-333-3434 84 Beds

Courthouse Manor

555 N. Glenn Ave
Washington Court House, OH 43160
740-335-9290 48 Beds

Central Ohio Assisted Living Facilities List

Franklin County

Abbingdon Arlington Assisted Living

1320 Old Henderson Rd., Columbus, OH 43220
614-451-4575 48 Beds

Alpine House of Columbus

1001 Schrock Rd., Columbus, OH 43229
614-505-3531 55 Beds

Ambassador Suites-Forum/Knightsbridge

4590 Knightsbridge Blvd., Columbus, OH 43214
614-451-6793 59 Beds

Ashford on Broad

4801 E. Broad St., Columbus, OH 43213
614-641-2995 165 Beds

Ashford at Sturbridge

3700 Sturbridge Ct., Hilliard OH 43026
614-633-4811 165 Beds

Ashford of Grove City

3197 Southwest Blvd, Grove City, OH 43123 614-
362-8169 165 Beds

Avalon of New Albany

245 E. Main St., New Albany, OH 43230
740-513-3044 150 Beds

Bickford of Bexley

2600 East Main St., Bexley, OH 43209
614-235-3900 75 Beds

Bickford of Scioto

3500 Riverside Dr., Columbus, OH 43221
614-457-3500 75 Beds

Bickford of Worthington

6525 N. High St., Worthington, OH 43085 614-
486-6500 105 Beds

Brookdale Lakeview Crossing

4000 Lakeview Crossing, Groveport, OH 43125
614-836-5990 99 Beds

Brookdale Muirfield

7220 Muirfield Dr., Dublin, OH 43017
614-336-3677 100 Beds

Brookdale Pinnacle

1305 Lamplighter Drive, Grove City, OH 43123
614-277-1200 135 Beds

Brookdale Trillium Crossing

3500 Trillium Crossing, Columbus, OH 43235
614-734-1000 120 Beds

Brookdale Westerville

6377 Cooper Rd., Columbus, OH 43231
614-901-2100 50 Beds

Carriage Court of Grove City

2320 Sonora Drive, Grove City, OH 43123
614-871-8000 92 Beds

Carriage Court of Hilliard

3570 Heritage Club Drive, Hilliard, OH 43026
614-529-7470 136 Beds

Cotter House Worthington

800 Proprietors Rd., Worthington, OH 43085
614-896-8700 94 Beds

Cranberry Park at Canal Winchester

6800 Gender Rd, Canal Winchester, OH 43110
614-834-6800 40 Beds

Cranberry Park at Riverview

3710 Olentangy River Rd., Columbus, OH 43214
614-457-1100 72 Beds

Cranberry Park at New Albany

5691 Thompson Road, Columbus, OH 43230
614-855-8866 42 Beds

Cranberry Park at Mill Run

3399 Mill Run Drive, Hilliard, OH 43026
614-715-1477 42 Beds

Central Ohio Assisted Living Facilities List

Franklin County (continued)

Cherry Blossom Senior Living

79 Blossom Field Blvd., Columbus, OH 43213
614-530-5922 50 Beds

Claremont Retirement Village

7041 Bent Tree Blvd, Columbus, OH 43235
614-761-2011 57 Beds

Cottages at Wexner Heritage

1151 College Ave., Columbus, OH 43209
614-559-5500 20 Beds

Creeside at The Village

2200 Welcome Pl., Columbus, OH 43209
614-559-0324 138 Beds

Columbus Danbury Senior Living

2870 Snouffer Rd., Columbus, OH 43235
614-339-0459 133 Beds

Dublin Assisted Living & Memory Support

6480 Post Rd., Dublin, OH 43016
614-389-0308 165 Beds

Dublin Glen Memory Care

6355 Emerald Parkway, Dublin, OH 43016
614-210-3397 66 Bed

Dr. Roy A. Burkhardt Center

1802 Riverside Dr., Columbus, OH 43212
614-486-9511 74 Beds

Forum at Knightsbridge

4625 Knightsbridge, Columbus, OH 43214
614-538-6660 71 Beds

Grand of Dublin, The

4500 John Sheilds Pkwy, Dublin, OH 43017
614-545-5524 40 Beds

Glenmont Center

4599 Avery Road, Hilliard, OH 43026
614-876-0084 20 Beds

Grove City Senior Living Traditions

3615 Glacial Lane, Grove City, OH 43123
614-957-0029 134 Beds

Harrison on 5th

579 W. 5th Ave., Columbus, OH 43201
380-215-1412 180 Beds

Hilliard Assisted Living & Memory Care

4303 Trueman Blvd., Hilliard, OH 43026
614-319-3305 115 Beds

Hoover Haus

3675 Hoover Rd., Grove City, OH 43123 614-
875-7600 22 Beds

Inn at Summit Trail

8115 Summit Rd., Reynoldsburg, OH 43068
740-919-4977 146 Beds

Inn at Library Way

4615 Library Way, Hilliard, OH 43026
614-363-1072 127 Beds

Inn at Winchester Trail

6401 Winchester Blvd., C-Winchester, OH 43110
614-829-6388 145 Beds

Inniswood Village

1195 North St., Westerville, OH 43081
614-839-6300 100 Beds

Kensington Place

1001 Parkview Blvd., Columbus, OH 43219
614-251-7688 187 Beds

Mayfair Village Retirement Comm.

3011 Hayden Road, Columbus, OH 43235
614-889-6202 172 Beds

Meadows at Friendship Village

6000 Riverside Drive, Dublin, OH 43017
614-734-2133 46 Beds

National Church Res. Lincoln Village

4959 Medfield Way, Columbus, OH 43228
614-870-1123 66 Beds

Norwich Springs Health Campus

4680 Library Way, Hilliard, OH 43026
614-363-1833 41 Beds

Central Ohio Assisted Living Facilities List

Franklin County (continued)

OakWood

1169 Bryden Rd, Columbus, OH 43205
614-502-3800 100 Beds

Oakleaf Village

5500 Karl Road, Columbus, OH 43229
614-762-9814 206 Beds

Ohio Living Westminster-Thurber Community

645-717 Neil Avenue, Columbus, OH 43215
614-228-8888 78 Beds

Parkside

2225 Taylor Park Dr. Reynoldsburg, OH 43068 614-501-1300 150 Beds

Sage Park Alzheimer Special Care Center

5201 Morse Rd., Gahanna, OH 43230
614-476-6744 66 Beds

Sanctuary at Tuttle Crossing

4880 Tuttle Crossing, Dublin, OH 43017
614-760-8870 56 Beds

Scioto Community

433 Obetz Rd., Columbus, OH 43207
614-491-2000 64 Beds

Smiths Mill Health Campus

7320 Smith's Mill Rd., New Albany, OH 43054
614-245-1060 41 Beds

StoryPoint of Grove City

3717 Orders Rd., Grove City, OH 43123
614-875-6500 122 Beds

Sunrise of Gahanna

775 East Johnstown, Gahanna, OH 43230
614-418-9775 64 Beds

Sunrise of Dublin

4175 Stoneridge Lane, Dublin, OH 43017
614-718-2062 120 Beds

StoryPoint of Gahanna

5435 Morse Rd, Gahanna, OH 43230
614-933-0078 89 Beds

The Bristol

7780 Oldentangy River Rd., Columbus, OH 43235
614-886-2818 75 Beds

Traditions at Mill Run

3550 Fishinger Boulevard, Hilliard, OH 43026
614-771-0100 150 Beds

Traditions at Stygler Commons

165 North Stygler Road, Gahanna, OH 43230
614-475-8778 54 Beds

Village at Westerville Retirement

215 Huber Village Blvd., Westerville, OH 43081
614-882-3782 73 Beds

Villas at Saint Therese

25 Noe-Bixby Road, Columbus, OH 43213
614-864-3576 158Beds

Wesley Glen Health Center

5155 N. High Street, Columbus, OH 43214
614-888-7942 133 Beds

Wesley Woods at New Albany

4588 Wesley Woods Blvd., New Albany, OH 43054
614-656-4100 188 Beds

Westerwood Assisted Living

5675 Ponderosa, Columbus, OH 43231
614-890-8285 104 Beds

Westerville Senior Living

363 Braun Pl., Westerville, OH 43081
614-423-4182 144 Beds

Willow Brook Christian Home

55 Lazelle Road, Columbus, OH 43235
614-885-3300 34 Beds

Woodlands of Columbus

5380 East Broad Street, Columbus, OH 43213
614-755-7591 127 Beds

Worthington Christian Village, Inc.

165 Highbluffs Blvd., Columbus, OH 43235
614-846-6076 60 Beds

Central Ohio Assisted Living Facilities List

Licking County

Altercare Newark S.

17 Forry Street, Newark, OH 43055
740-345-8175 9 Beds

Chapel Grove Inn

1400 Chapel Way, Heath, OH 43056
740-522-4663 120 Beds

Hearth Brook

331 Goosepond Road Newark, OH 43055
740-366-0005 50 Beds

Otterbein at Granville

2158 Columbus Road, Granville, OH 43023
740-321-0400 31Beds

Middleton Assisted Living

1500 Weaver Dr., Granville, OH 43023
740-587-0059 192 Beds

National Church Res. Chimes Terrace

65 S. Williams St., Johnstown, OH 43031
740-966-5118 48 Beds

Randall Residence of Newark

1065 Johnson Avenue, Newark, OH 43055
740-366-5271 45 Beds

Sharonbrooke

920 Sharon Valley Road, Newark, OH 43055
740-366-7333 125 Beds

Madison County

Bluebird Retirement Community

2260 St. Rt. 56 SW, London, OH 43140
740-506-0937 130 Beds

Edgewater Place

11351 Lafayette Plain City Rd., Plain City, OH 43064
614-873-9700 80 Beds

The Madison House

351 Keny Boulevard, London, OH 43140
740-605-4753 88 Bed

Pickaway County

Brown Memorial Home, Inc.

158 East Mound Street Circleville, OH 43113
740-474-6238 15 Beds

Cranberry Park at Pickaway Manor

391 Clark Drive, Circleville, OH 43113
740-474-6036 25 Beds

Wyngate at Circleville, The

745 Northridge Rd., Circleville, OH 43113
740-474-1411 66 Beds

Union County

Bluebird Retirement Community

145 Colemans Crossing Blvd, Marysville, OH 43040
937-645-6900 125 Beds

Heritage Senior Living of Marysville

1565 London Ave, Marysville, OH 43040
937-738-7342 85 Beds

Milcrest Health Care

800 Milcrest Dr., Marysville, OH 43040
937-642-1026 38 Beds

Walnut Crossing Assisted Living

311 Professional Way, Marysville, OH 43040
937-490-1506 90 Beds

LIST of Central Ohio Skilled & Intermediate Nursing Facilities

Organized Alphabetically by County

For more detailed information, visit:

- www.ltc.age.ohio.gov
- www.odh.ohio.gov--Ohio Dept. of Health
- www.medicare.gov

This list is **only** for Skilled Level of Care

Note: Every reasonable effort is taken to ensure accurate information. However, we cannot guarantee completeness or timeliness of information. Some of the names, addresses, or phone numbers of the facilities may have changed since the printing of this guide. List updated Spring 2024.

Central Ohio Skilled & Intermediate Nursing Facilities

Description

- **Skilled Nursing Facility (SNF)** is a facility that provides *nursing & rehabilitative* care that is prescribed by a physician and is delivered on a daily basis by skilled medical personnel such as nurses or therapists. Skilled care is generally provided to assist patients **during recovery** following hospitalization for treatment of acute conditions. Medicare will pay for up to 100 days of skilled care (some of those days are a partial payment). But, because skilled care is so narrowly defined, Medicare payments will usually last for only a very short time (21 days or fewer). Many nursing facilities have a skilled or rehabilitation wing which offers short term care as well as a wing with residents who are there for longer periods.
- Medicare can pay for **skilled** nursing facility care and thus keeps a database of over 17,000 skilled nursing facilities in the United States. Information is available on 10 quality indicators, examining such factors as use of physical restraints and the percentage of residents who have bedsores. This information may be found at www.medicare.gov. The information also can be accessed by calling 1-800-MEDICARE.
 - **The cost** for skilled rehabilitative care can range from \$300-450 per day depending on the facility and the person's needs.
- **Intermediate Care Facility (ICF)** is a facility which provides long term care for persons who do **not** need specialized or daily therapeutic services. Intermediate care is provided by medical professionals such as registered or licensed practical nurses, and therapists, under the supervision of a physician. Medicare does **NOT** cover intermediate care in nursing homes but Medicaid **DOES**. Many people who are living in Intermediate Care Facilities have limited income and have spent down their assets to apply for Medicaid to cover their care.
 - **The cost** for intermediate level of care can range from \$180-300 per day depending on the facility and the person's needs.
- In Ohio, both skilled and intermediate nursing facilities are licensed and regulated by the **Ohio Department of Health** www.odh.ohio.gov. To make a formal complaint about care in a facility, contact the Ohio Department of Health in writing or by phone at 800-342-0553 (Monday- Friday 8:00am-5:00pm).
- **The Ohio Long Term Care Consumer Guide** lists skilled and intermediate nursing facilities by county and by zip code. Its website is www.ltc.age.ohio.gov.

Central Ohio Skilled and Intermediate Nursing Facilities List

Delaware County

Arbors at Delaware

2270 Warrensburg Rd., Delaware, OH 43015
740-369-9614 99 Beds

Capri Gardens

6975 Graphics Way, Lewis Center, OH 43035
740-657-2200 82 Beds

Cherith Care Center at Willow Brook

100 Willow Brook Way S., Delaware, OH 43015
740-369-0048 34 Beds

Country Club Center V, Inc.

478 S. Sandusky St, Delaware, OH 43015
740-369-8741 50 Beds

Country View of Sunbury

14961 North Old 3C Highway, Sunbury, OH 43074
740-965-3984 99 Beds

Delaware Court Healthcare Center

4 New Market Drive, Delaware, OH 43015
740-369-6400 75 Beds

Landings of Westerville Health & Rehab.

350 Country Lane Rd., Westerville, OH 43082
740-616-7131 120 Beds

Ohio Living Sarah Moore Health Care

26 N. Union Street, Delaware, OH 43015
740-362-9641 47 Beds

Fairfield County

Arbors at Carroll

3680 Dolson Court, Carroll, OH 43112
704-654-1641 99 Beds

Buckeye Care & Rehab Center

1900 East Main St., Lancaster, OH 43130
740-653-8630 99 Beds

Crestview Manor Nursing Home

957 Becks Knob Rd., Lancaster, OH 43130
740-654-2634 180 Beds

Embassy of Pickerington

1300 Hill Road North,
Pickerington, OH 43147
614-863-1858 96 Beds

Lanfair Center for Rehab & Nursing Care

1590 Chartwell Street, Lancaster, OH 43130
740-687-5100 84 Beds

Main Street Terrace Care Center

1318 East Main Street, Lancaster, OH 43130
740-653-8767 50 Beds

Violet Springs Health Campus

603 Diley Rd., Pickerington, OH 43147
614-751-6426 50 Beds

Skilled and Intermediate Nursing Facilities List

Fayette County

Court House Manor

555 N. Glenn Ave, Washington CH, OH 43160
740-335-6391 99 Beds

Four Seasons of Washington Court House Nursing & Rehab

201 Courthouse Parkway, Washington CH, OH 43160
740-895-6101 65 Beds

Signature Healthcare of Fayette County

375 Glenn Avenue, Washington CH, OH 43160
740-335-9270 92 Beds

St. Catherine Manor of Washington Court House

250 Glenn Avenue, Washington CH, OH 43160
740-335-9290 55 Beds

Franklin County

Abaco Rehab and Nursing Center

740 Canonby Place, Columbus, OH 43223
614-224-5738 99 Beds

Allbridge Rehab and Nursing Care

5500 E. Broad St., Columbus, OH 43213
380-799-5500 43 Beds

Altercare of Canal Winchester Post Acute

6725 Thrush Dr., Canal Winchester, OH 43110
614-834-2500 72 Beds

Arlington Court Nursing Home

1605 Northwest Prof. Plaza, Columbus, OH 43220
614-451-5677 120 Beds

Bella Terrace Nursing & Rehab.

1520 Hawthorne Ave., Columbus, OH 43203
614-252-4931 99 Beds

Buckeye Terrace Rehab & Nursing

140 N. State Street, Westerville, OH 43086 614-
882-4055 70 Beds

Capital City Gardens & Rehab

920 Thurber Drive W, Columbus, OH 43215
614-464-2273 104 Beds

Columbus Alzheimer Care Center

700 Jasonway Ave., Columbus, OH 43214
614-459-7050 99 Beds

Columbus Colony for Elderly Care

1150 Colony Dr., Westerville, OH 43081
614-891-5055 110 Beds

Columbus Healthcare Center

4301 Clime Road, N Columbus, OH 43228
614-276-4400 100 Beds

Continuing Healthcare of Gahanna

167 North Stygler Road, Gahanna, OH 43230
614-475-8778 94 Beds

Convalarium at Indian Run

6430 Post Road, Dublin, OH 43017
614-761-1188 90 Beds

Crown Pointe Care Center

1850 Crown Park Ct., Columbus, OH 43235
614-459-7293 90 Beds

Darby Glenn Nursing & Rehabilitation

4787 Tremont Club Dr., Hilliard, OH 43026
614-777-6001 100 Beds

Skilled and Intermediate Nursing Facilities List

Franklin County (continued)

Eastland Health Care and Rehab.

2425 Kimberly Parkway E., Columbus, OH 43232
614-868-9306 93 Beds

Embassy of Canal Winchester

36 Lehman Dr., Canal Winchester, OH 43110
614-834-2273 170 Beds

Embassy of Woodview

2770 Clime Road, Columbus, OH 43223
614-276-8222 95 Beds

First Community Village Healthcare

1801 Riverside Drive, Columbus, OH 43212
614-324-4448 68 Beds

Forest Hills Center

2841 East Dublin-Granville, Columbus, OH 43231
614-891-1111 75 Beds

Friendship Village of Dublin

6000 Riverside Drive, Dublin, OH 43017
614-764-2133 50 Beds

Grand of Dublin, The

4500 John Shields Parkway, Dublin, OH 43017
614-545-5524 100 Beds

Highbanks Care Center

111 Lazelle Road E., Worthington, OH 43235
614-888-2021 56 Beds

Laurels of Gahanna

5151 N. Hamilton Rd., Columbus, OH 43230
614-337-1066 112 Beds

Laurels of Norworth

6830 N. High St., Worthington, OH 43085
614-888-4553 126 Beds

Laurels of Walden Park

5700 Karl Rd., Columbus, OH 43229
614-846-5420 225 Beds

Laurels of West Columbus

441 Norton Rd., Columbus, OH 43228
614-812-1200 97 Beds

Laurels of Worthington

1020 High St., Worthington, OH 43085
614-885-0408 95 Beds

Legacy of Dublin

4075 W. Dublin-Granville Rd., Columbus, OH 43017
614-210-0541 120 Beds

Legacy of Westerville

1060 Eastwind Dr., Westerville, OH 43081
614-895-1038 130 Beds

Majestic Care of Columbus

44 S. Souder Ave., Columbus, OH 43222
614-228-5900 120 Beds

Majestic Care of Whitehall

4805 Langley Ave., Whitehall, OH 43213
614-501-8271 150 Beds

Mayfair Village Nursing Care

3000 Bethel Rd, Columbus, OH 43230
614-889-6320 99 Beds

McNaughten Pointe Nursing and Rehab

1425 Yorkland Rd., Columbus, OH 43232
614-861-6666 135 Beds

Meadowgrove Transitional Care

5919 Blue Star D.r, Grove City, OH 43123
614-594-1600 99 Beds

Mill Run Care Center

3399 Mill Run Dr., Hilliard, OH 43026
614-527-3000 66 Beds

Mohun Health Care Center

2340 Airport Dr., Columbus, OH 43219
614-416-6147 72 Beds

Monterey Care Center

3929 Hoover Rd., Grove City, OH 43123
614-875-7700 155 Beds

Mother Angeline McCrory Manor

5199 East Broad St., Columbus, OH 43213
614-751-5700 126 Beds

Skilled and Intermediate Nursing Facilities List
Franklin County (continued)

New Albany Care Center

5691 Thompson Rd., Columbus, OH 43230
 614-855-8866 67 Beds

Norwich Springs Health Campus

4680 Liberty Way, Hilliard, OH 43026
 614-363-1833 50 Beds

Ohio Living Westminster-Thurber Community

717 Neil Avenue, Columbus, OH 43215
 614-228-8888 128 Beds

Otterbein Gahanna

402 Liberty Way, Gahanna, OH 43230
 614-230-6869 60 Beds

Otterbein New Albany

6690 Liberation Way, New Albany, OH 43054,
 614-400-5596 60Beds

Riverview Care Center

1151 College Ave., Columbus, OH 43209
 614-231-4900 99 Beds

Sanctuary at Tuttle Crossing

4880 Tuttle Crossing, Dublin, OH 43017
 614-760-8870 66 Beds

Scioto Community-Capital Health

433 Obetz Road, Columbus, OH 43207
 614-491-2000 125 Beds

Smiths Mill Health Campus

7320 Smiths Mill Rd., New Albany, OH 43054
 614-245-1060 50 Beds

Taylor Springs Health Campus

748 Taylor Rd, Gahanna, OH 43230
 614-863-6384 50 Beds

Truman Point Care Center

466 Truman Blvd., Hilliard, OH 43026
 614-850-8655 72 Beds

Wesley Glen Health Center

5155 N. High Street, Columbus, OH 43214
 614-369-5269 65 Beds

Wesley Ridge – Robert A Barnes Center

2225 Taylor Park Dr., Reynoldsburg, OH 43068
 614-759-0023 25 Beds

Wesley Woods at New Albany

4588 Wesley Woods Blvd, New Albany, OH 43054
 614-656-4100 16 Beds

West Park Care Center

1700 Heinzerling Dr., Columbus, OH 43223
 614-274-4222 99 Beds

Westerwood Rehab and Nursing

5757 Ponderosa Dr., Columbus, OH 43231
 614-890-8287 75 Beds

Whetstone Care Center

3710 Olentangy River Rd., Columbus, OH 43214
 614-457-1100 145 Beds

Willow Brook Christian Home

55 Lazelle Road, Columbus, OH 43235
 614-885-3300 50 Beds

Worthington Christian Village

165 Highbluffs Blvd., Columbus, OH 43235
 614-846-6076 50 Beds

Skilled and Intermediate Nursing Facilities List

Licking County

Altercare Newark N.

151 Price Road,
Newark, OH 43055
740-366-2321

81 Beds

Johnstown Point Nursing & Rehab

383 W. Coshocton St.
Johnstown, OH 43031
740-809-1700

80 Beds

Altercare Newark S.

17 Forry Street,
Newark, OH 43055
740-345-9197

48 Beds

Otterbein at Granville

2158 Columbus Road,
Granville, OH 43023
740-321-0400

20 Beds

Arlington Care Center

98 South 30th Street,
Newark, OH 43055
740-344-0303

110 Beds

Laurels of Heath

177 S. 30th St.,
Heath, OH 43056
740-522-1171

150 Beds

Embassy of Newark

75 McMillen Drive,
Newark, OH 43055
740-344-0357

145 Beds

Pataskala Oaks Care Center

144 E. Broad Street,
Pataskala, OH 43062
740-927-9888

86 Beds

Flint Ridge Nursing & Rehab.

1450 West Main Street,
Newark, OH 43055
740-348-1300

99 Beds

Tuscany Gardens

7400 Hazelton Etna Road
SW, Pataskala, OH 43062
740-964-0803

123 Beds



Skilled and Intermediate Nursing Facilities List

Madison County

Arbors West

375 West Main Street,
West Jefferson, OH 43162
740-879-7661 96 Beds

London Health & Rehab Center

218 Elm St.,
London, OH 43140
740-852-3100 78 Beds

Pickaway County

Brown Memorial Home, Inc.

158 East Mound Street,
Circleville, OH 43113
740-474-6238 44 Beds

Logan Elm Health Care Center

370 Tarlton Road,
Circleville, OH 43113
740-474-3121 99 Beds

Circleville Post Acute Center

1155 Atwater Avenue,
Circleville, OH 43113
740-477-1695 97 Beds

Pickaway Manor Care Center

391 Clark Drive,
Circleville, OH 43113
740-474-6036 99 Beds

Union County

Memorial Gables Nursing Care & Rehab.

390 Gables Drive,
Marysville, OH 43040
937-642-3893 112 Beds

Prestige Gardens Rehab & Nursing

755 South Plum Street
Marysville, OH 43040
937-644-8836 99 Beds

Milcrest Nursing Center

730 Milcrest Drive,
Marysville, OH 43040
937-642-1026 50 Beds

LIST of Central Ohio Hospice Providers

Organized Alphabetically

For more detailed information, visit:

- Ohio Dept. of Health www.odh.ohio.gov
- Medicare website www.medicare.gov

Note: Every reasonable effort is taken to ensure accurate information. However, we cannot guarantee completeness or timeliness of information. Some of the names, addresses, or phone numbers of the facilities may have changed since the printing of this guide. List updated Spring 2024.

Central Ohio Hospice Services

Description

- Hospice is a program of care and support for people who are terminally ill. The focus is on comfort, not on curing an illness. Hospice programs generally require that the person has a terminal diagnosis and is not receiving services aimed at curing an illness.
- If a person qualifies for hospice care and chooses to get the hospice benefit, hospice services MAY include physical care, counseling, drugs, equipment, and supplies for the terminal illness and related condition(s).
- Families and caregivers of a person on hospice care can also receive support group and counseling benefits.
- Hospice services can be provided in most types of care settings including a person's home, an adult care facility, an assisted living facility and an intermediate care facility.
- A person can apply for hospice care at any of the providers licensed in Central Ohio. Most long-term care facilities have a preferred provider but a person is free to choose any hospice provider.
- Medicare covers hospice care but does not cover room and board services. In general, Medicare doesn't pay for 24-hour assistance if a person receives hospice services at home. For more on Medicare coverage of hospice care go to www.medicare.gov.
- Sometimes people are confused by the terms "**Hospice**" & "**Palliative**" **Care**.
 - **Hospice** can be provided in **any** care setting and requires that a person discontinue treatments solely aimed at curing the underlying disorder. Hospice will continue treatments aimed at making a person comfortable or relieving pain. Some short-term care is allowed in an inpatient setting.
 - **Palliative Care** is generally offered through a setting like a hospital or cancer treatment center and allows comfort care to be administered at the same time that the person is continuing to be treated for a cure. Many hospitals or treatment centers have palliative care teams who can consult regarding a person's comfort and pain control during treatment.



CENTRAL OHIO HOSPICE PROVIDERS

Bella Care Hospice & Palliative Care

110 Polaris Parkway Suite 302,
Westerville, OH 43082
614-473-0044

Brookdale Hospice Columbus

2550 Corporate Exchange Dr.
Columbus, OH 43231
614-210-1150

Capital City Hospice & Homecare

2800 Corporate Exchange Dr.
Columbus, OH 43231
614-441-9300

Care 360 Hospice

6099 Riverside Dr.,
Columbus, OH 43017
614-674-3766

Echo Hospice of Ohio, LLC

8050 N. High St. Suite 160,
Columbus, 43235
614-939-7930

Faith and Family Supportive Care

630 Morrison Rd., Suite 310
Gahanna, OH 43220
614-755-2347

Fairhope Hospice & Palliative Care

282 Sells Rd.,
Lancaster, OH 43130
740-654-7077

Generations Hospice, LLC

1435A West Main St
Newark, OH 43055
740-348-1399

Gentiva 1

540 Office Center Place,
Gahanna, OH 43230
614-414-0500

Hospice of Central Ohio

2269 Cherry Valley Rd.,
Newark, OH 43055
740-788-1400

Hospice of Fayette Co.

222 North Oakland Ave,
Washington CH, OH 43160
740-335-0149

Interim Health Care & Hospice

784 Morrison Rd, Suite B, Gahanna, OH 43230
614-880-2929

Kindred Hospice II

540 Officecenter Place, Suite 100, Gahanna, OH 43230
614-414-0500

Loving Care Hospice & Home Health

56 S. Oak St., London, OH 43140
937-644-1928

Mt. Carmel Hospice

1144 Dublin Rd., Columbus, OH 43215
614-234-0200

National Church Residence

2245 North Bank Dr. Columbus, OH 43220
614-457-6950

Nationwide Children's Hospice

255 E. Main St., Columbus, OH 43215
614-355-1100

Ohio Health Hospice

800 McConnell Dr., Columbus, OH 43214
614-533-0031

Ohio Living Hospice

2740 Airport Dr. Suite 140, Columbus, OH 43229
614-433-0031

ProMedica Hospice

6500 Busch Blvd, Suite 210, Columbus, OH 43229
614-840-9856

Summit Hospice

1 East Campus View Blvd., Columbus, OH 43213
513-344-4310

Tranquility Hospice

1949 State Route 37, Suite C, Delaware, OH 43015
740-990-1023

Viaquest Hospice

171 Morey Dr., Marysville, OH 43040
614-339-8436

Wesley Hospice LLC

4588 Wesley Wood Blvd. Suite 2A, New Albany, OH 43054
614-451-6700

Zuzman Community Hospice

1151 College Ave., Columbus, OH 43209
614-559-0350

Notes:



**Do you need help
at home?**

**Are you caring
for a loved one?**

Call COAAA today!

Central Ohio Area Agency on Aging (COAAA) helps older adults and individuals with disabilities live safely and independently in their homes for as long as possible. We have the knowledge and experience to connect you to the resources and services you need.



**Your Connection
to Care**

**800-589-7277
coaaa.org**